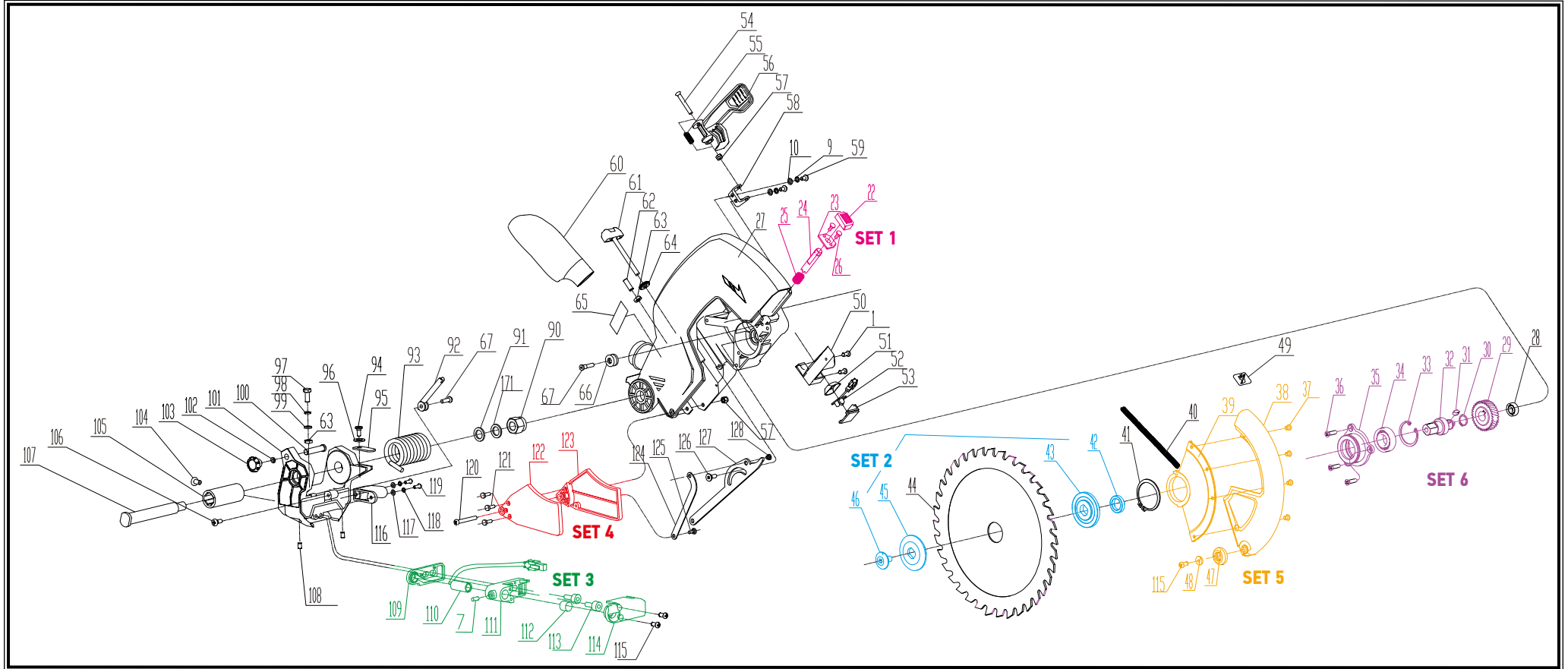


| POS. | CODE | DESCRIPTION | QTY |
|--------------------------|--------|------------------------|-----|
| 1 | A07909 | SCREW ST4.2X10 | 2 |
| 9 | A07917 | SPRING WASHER | 2 |
| 10 | A07918 | FLAT WASHER | 2 |
| SET 1 (22-26) | A07929 | SPINDLE LOCK PLATE SET | 1 |
| 27 | A07930 | UPPER GUARD | 1 |
| 28 | A07931 | BEARING 607-2Z | 1 |
| 40 | A07934 | LOWER GUARD SPRING | 1 |

| POS. | CODE | DESCRIPTION | QTY |
|--------------------------------|--------|---------------------------|-----|
| 41 | A07935 | SHAFT CIRCLIP | 1 |
| SET 2 (42-43-45-46) | A07936 | SET FLANGES | 1 |
| 44 | | BLADE | 1 |
| 49 | A07937 | LOWER GUARD WARNING LABEL | 1 |
| 50 | A07938 | LED SUPPORT | 1 |
| 51 | A07939 | LED VIEWFINDER | 1 |

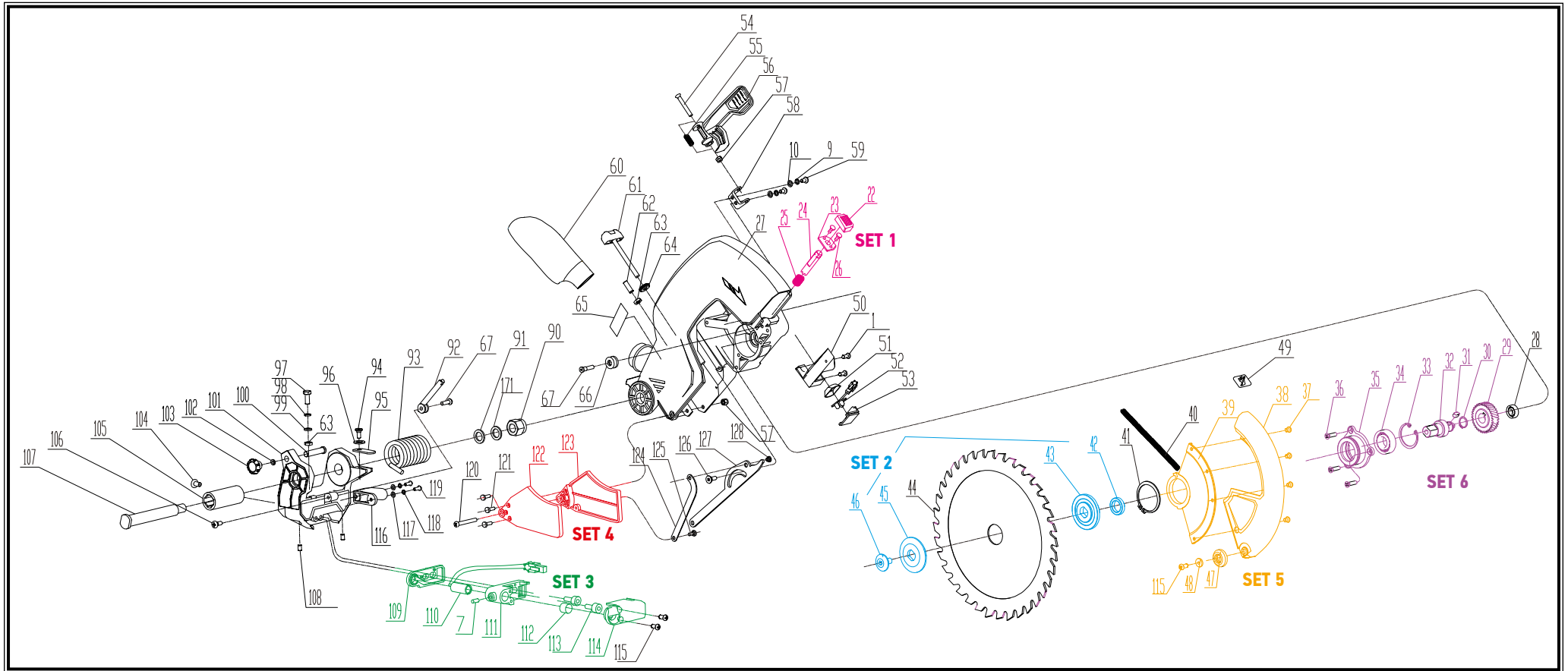
| POS. | CODE | DESCRIPTION | QTY |
|------|--------|------------------------------|-----|
| 52 | A07940 | LED LAMP | 1 |
| 53 | A07941 | LED GLAZING | 1 |
| 54 | A07942 | SCREW M5X35 | 1 |
| 55 | A07943 | UPPER GUARD SELF-LOCK SPRING | 1 |
| 56 | A07944 | SAFETY LOCK HANDLE | 1 |
| 57 | A07945 | LOOSE-PROOF NUT M5 | 2 |
| 58 | A07946 | SAFETY LOCK SUPPORT | 1 |
| 59 | A07947 | SCREW M5X10 | 2 |



| POS. | CODE | DESCRIPTION | QTY |
|------|--------|------------------------|-----|
| 60 | A07948 | DUST BAG | 1 |
| 61 | A07949 | HEIGHT ADJUSTMENT KNOB | 1 |
| 62 | A07950 | SCREW M6X20 | 1 |
| 63 | A07951 | NUT M6 | 2 |
| 64 | A07952 | HEIGHT ADJUSTMENT NUT | 1 |
| 65 | A07953 | LASER WARNING LABEL | 1 |
| 66 | A07954 | SPRING WHEEL | 1 |
| 67 | A07955 | STEP SCREW | 2 |

| POS. | CODE | DESCRIPTION | QTY |
|------|--------|------------------------------|-----|
| 90 | A07975 | LOOSE-PROOF NUT M12 | 1 |
| 91 | A07976 | FLAT WASHER | 1 |
| 92 | A07977 | SLEEVE | 1 |
| 93 | A07978 | TORSION SPRING | 1 |
| 94 | A07979 | HEIGHT ADJUSTMENT STEP SCREW | 1 |
| 95 | A07980 | HEIGHT ADJUSTMENT PLATE | 1 |
| 96 | A07981 | WAVE WASHER | 1 |
| 97 | A07982 | SCREW M6X20 | 1 |

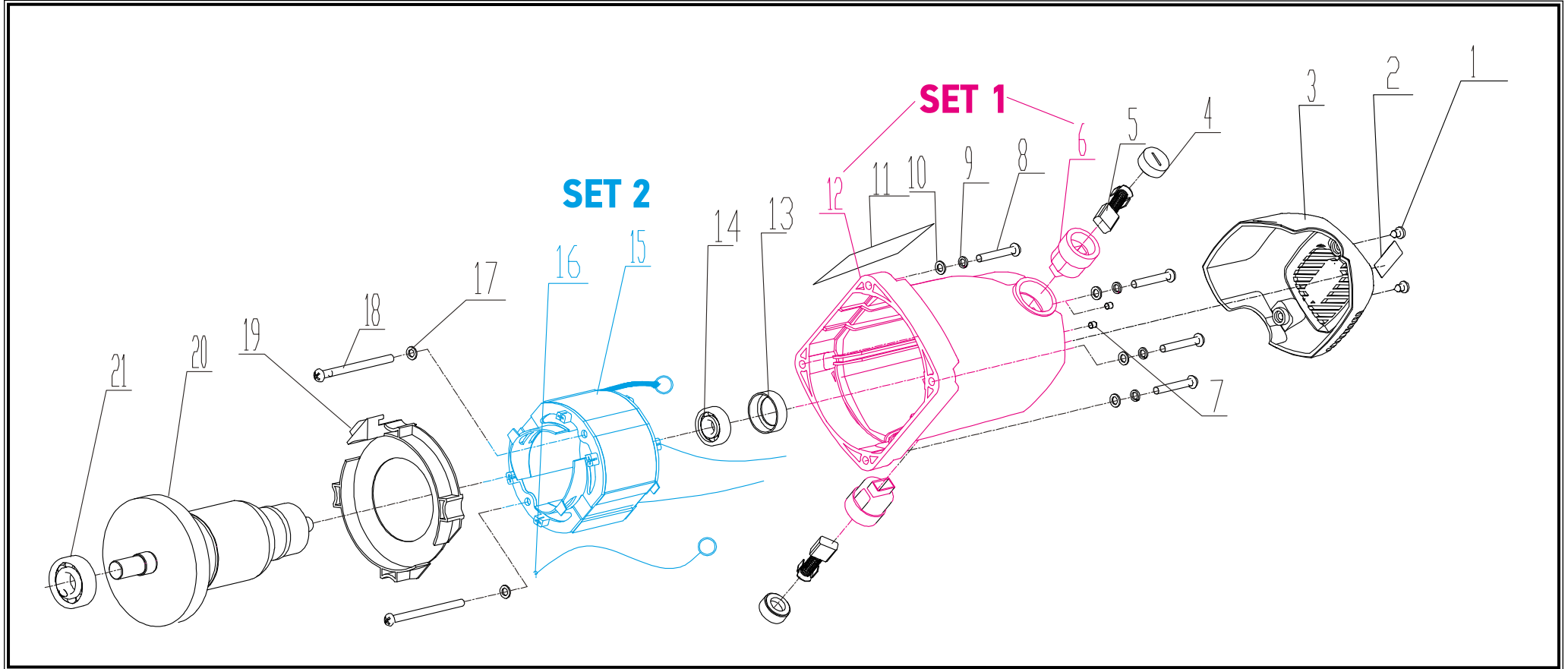
| POS. | CODE | DESCRIPTION | QTY |
|------|--------|-------------------------|-----|
| 98 | A07983 | SPRING WASHER | 1 |
| 99 | A07984 | FLAT WASHER | 1 |
| 100 | A07985 | BRACKET STOP PIN | 1 |
| 101 | A07986 | BRACKET FOR UPPER GUARD | 1 |
| 102 | A07987 | RUBBER WASHER | 1 |
| 103 | A07988 | BEVEL LOCK PIN CAP | 1 |
| 104 | A07989 | BUMPER | 1 |
| 105 | A07990 | TORSION SPRING SLEEVE | 1 |



| POS. | CODE | DESCRIPTION | QTY |
|-------------------------------------|--------|---------------------------|-----|
| 106 | A07991 | LEVER SCREW | 1 |
| 107 | A07992 | PIVOT PIN FOR UPPER GUARD | 1 |
| 108 | A07993 | SCREW M5X6 | 2 |
| SET 3 (7, 109-114) | A07994 | LASER SUPPORT ASS. | 1 |
| 115 | A08078 | SCREW | 2 |
| 116 | A07995 | WINDING SUPPORT | 1 |
| 117 | A07996 | FLAT WASHER | 2 |

| POS. | CODE | DESCRIPTION | QTY |
|----------------------------------|--------|---------------------------------------|-----|
| 118 | A07997 | SPRING WASHER | 2 |
| 119 | A07998 | SCREW M4X8 | 2 |
| 120 | A07999 | LOWER GUARD BACK COVER LOCATING SCREW | 1 |
| 121 | A08000 | LOWER GUARD COVER RIVET | 3 |
| SET 4 (122+123) | A08001 | LOWER GUARD COVER (RIGHT+LEFT) | 1 |
| 124 | A08003 | LOWER GUARD LEVER | 1 |

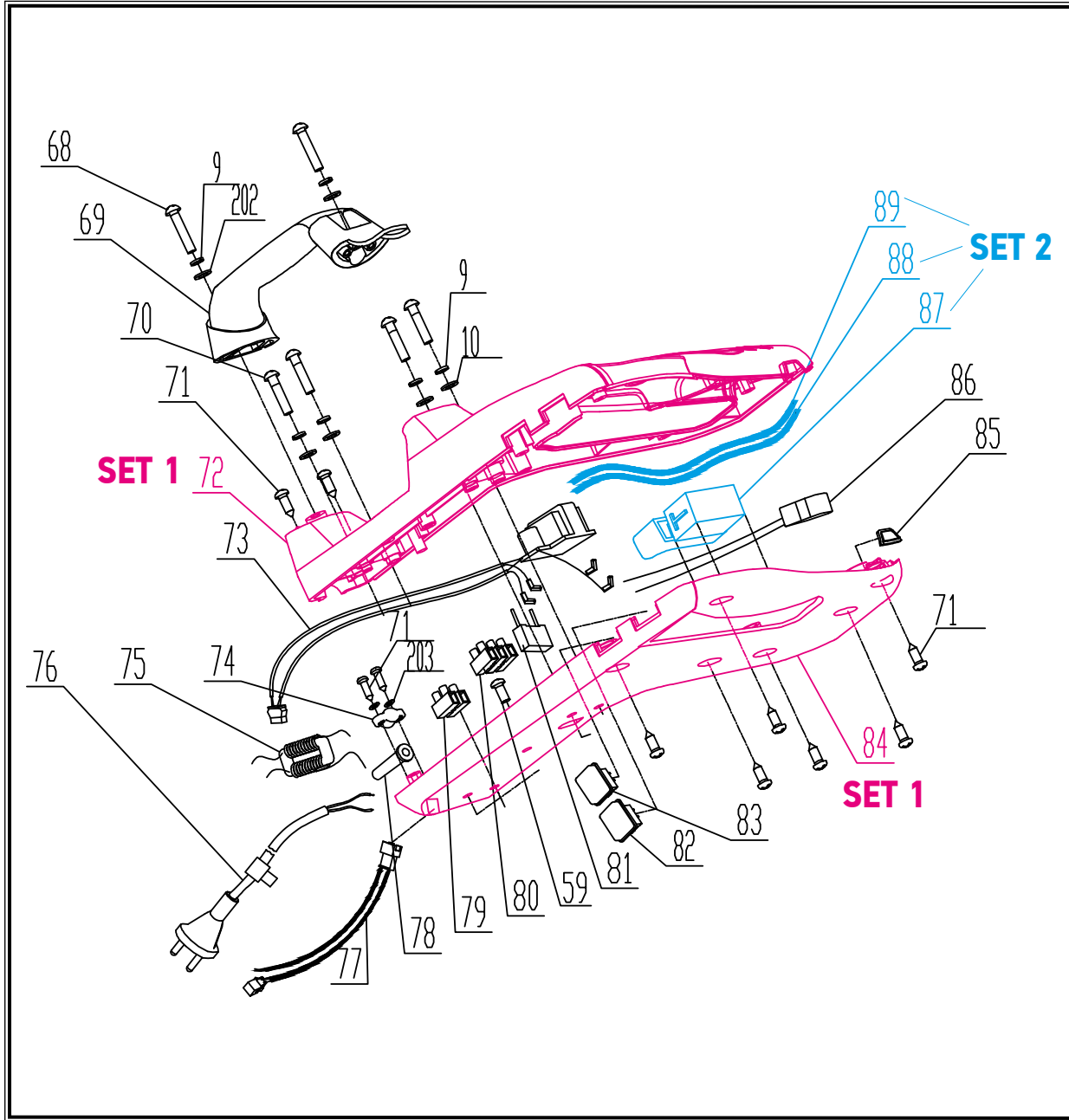
| POS. | CODE | DESCRIPTION | QTY |
|---|--------|------------------------------|-----|
| 125 | A08004 | LOWER GUARD COVER STEP SCREW | 1 |
| 126 | A08005 | LEVER LOCATING SCREW | 1 |
| 127 | A08006 | LOWER GUARD COVER LEVER | 1 |
| 128 | A08007 | LOWER GUARD LEVER RIVET | 1 |
| 171 | A08050 | WAVE WASHER | 1 |
| SET 5 (37-39, 47, 48, 115) | A07933 | BLADE GUARD ASSEMBLY | 1 |
| SET 6 (29-36) | A07932 | OUTPUT SHAFT ASSEMBLY | 1 |



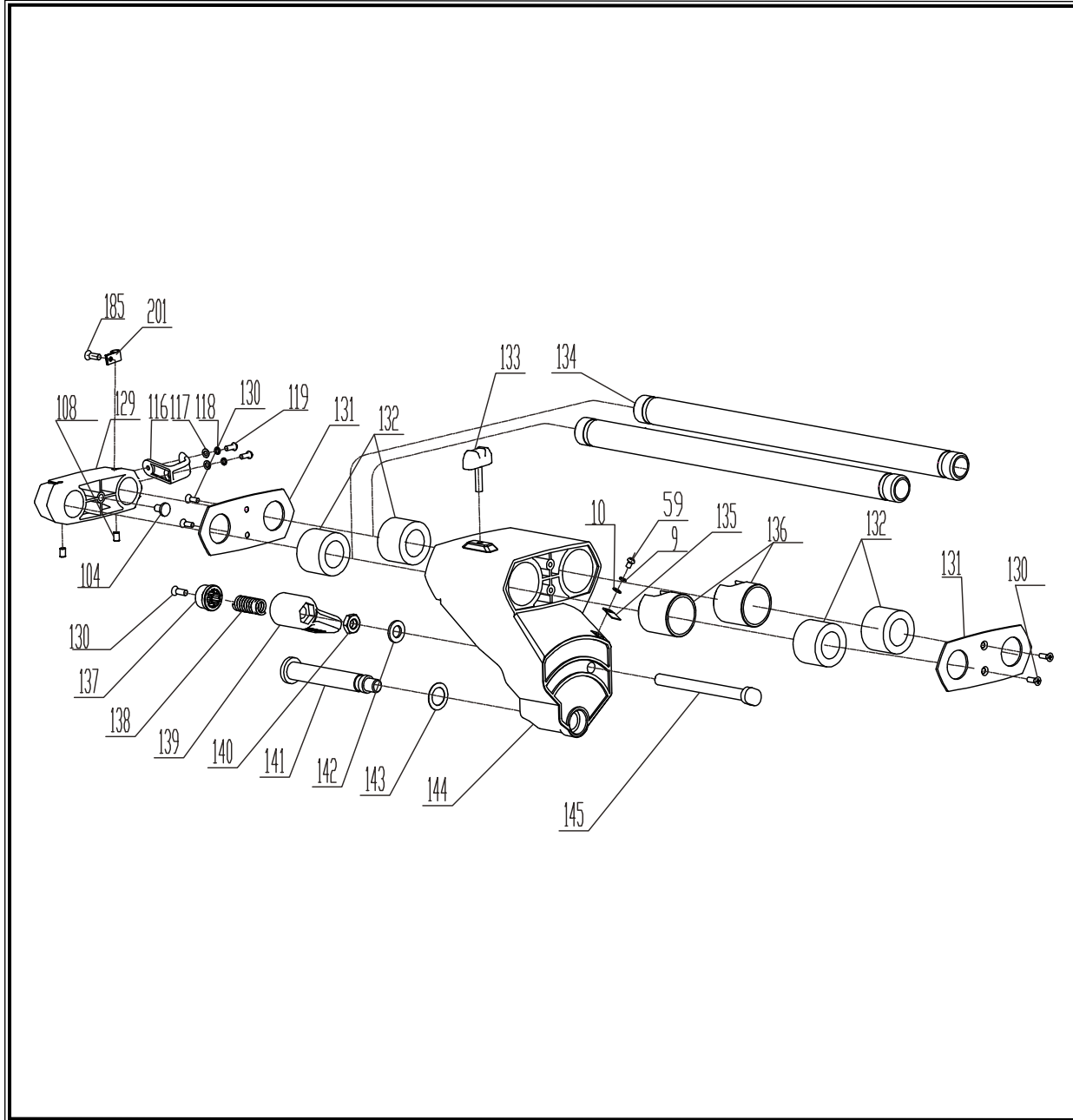
| POS. | CODE | DESCRIPTION | QTY |
|-------------------------|--------|---|-----|
| 1 | A07909 | SCREW ST4.2X10 | 2 |
| 2 | A07910 | MOTOR BACK COVER LABEL | 1 |
| 3 | A07911 | MOTOR BACK COVER | 1 |
| 4 | A07912 | CARBON BRUSH CAP | 2 |
| 5 | A07913 | CARBON BRUSH SET | 1 |
| SET 1 (6+12) | A07920 | MOTOR HOUSING ASSEMBLY WITH CARBON BRUSH HOLDER | 1 |
| 7 | A07915 | SCREW M4X6 | 1 |

| POS. | CODE | DESCRIPTION | QTY |
|--------------------------|--------|------------------------|-----|
| 8 | A07916 | SCREW M5X30 | 4 |
| 9 | A07917 | SPRING WASHER | 4 |
| 10 | A07918 | FLAT WASHER | 4 |
| 11 | A07919 | NAME STICKER | 1 |
| 13 | A07921 | RUBBER BEARING SUPPORT | 1 |
| 14 | A07922 | BEARING 6000-2Z | 1 |
| SET 2 (15+16) | A07923 | FIELD ASSEMBLY | 1 |

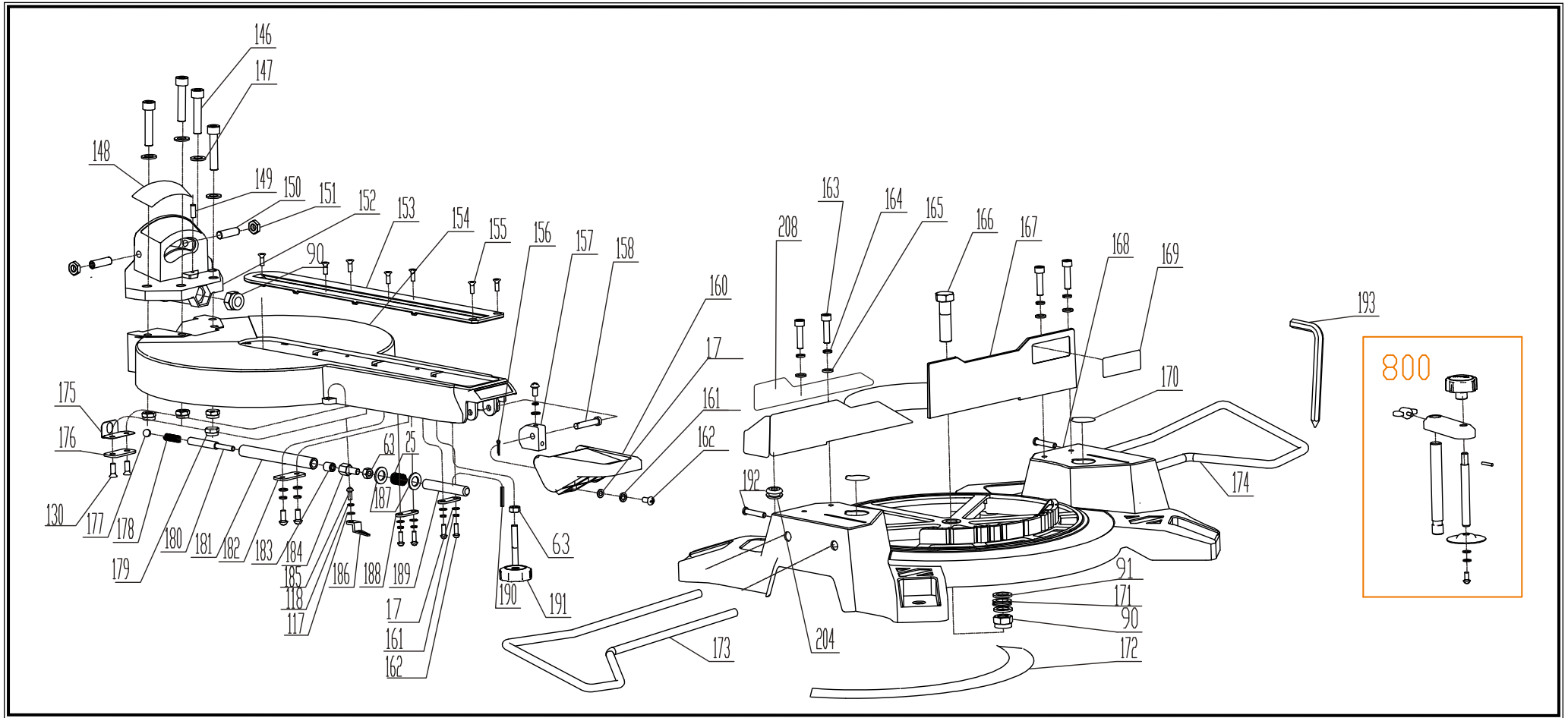
| POS. | CODE | DESCRIPTION | QTY |
|------|--------|-------------------|-----|
| 17 | A07924 | FLAT WASHER | 2 |
| 18 | A07925 | SCREW ST4.8X70 | 2 |
| 19 | A07926 | BAFFLE | 1 |
| 20 | A07927 | ARMATURE ASSEMBLY | 1 |
| 21 | A07928 | BEARING 6202-ZZ | 1 |



| POS. | CODE | DESCRIPTION | QTY |
|----------------------|--------|---------------------------------|-----|
| 9 | A07917 | SPRING WASHER | 2 |
| 10 | A07918 | FLAT WASHER | 4 |
| 59 | A07947 | SCREW M5X10 | 1 |
| 68 | A07956 | SCREW M5X16 | 2 |
| 69 | A07957 | HANDLE ASSEMBLY | 1 |
| 70 | A07958 | SCREW M5X40 | 2 |
| 71 | A07959 | SCREW ST4.2X16 | 10 |
| SET 1 (72+84) | A07960 | HANDLE ASSEMBLY | 1 |
| 73 | A07961 | TRANSFORMER | 1 |
| 74 | A07962 | CORD CLAMP | 1 |
| 75 | A07963 | INDUCTANCE | 1 |
| 76 | 40753 | CABLE | 1 |
| 77 | A07965 | LASER AND LED CONNECTING LINE | 1 |
| 78 | A07966 | CORD SLEEVE | 1 |
| 79 | A07967 | TERMINAL BLOCK | 1 |
| 80 | A07968 | TERMINAL BLOCK | 1 |
| 81 | A07969 | CAPACITOR (0.33UF) | 1 |
| 82 | A07970 | LASER SWITCH | 1 |
| 83 | A07971 | LED SWITCH | 1 |
| 85 | A07972 | WORKING LIGHT TRANSPARENT COVER | 1 |
| 86 | A07973 | WORKING LIGHT | 1 |
| SET 2 (87-89) | A07974 | SWITCH TRIGGER ASSEMBLY | 1 |
| 202 | A08075 | FLAT WASHER | 2 |
| 203 | A08076 | FLAT WASHER | 2 |



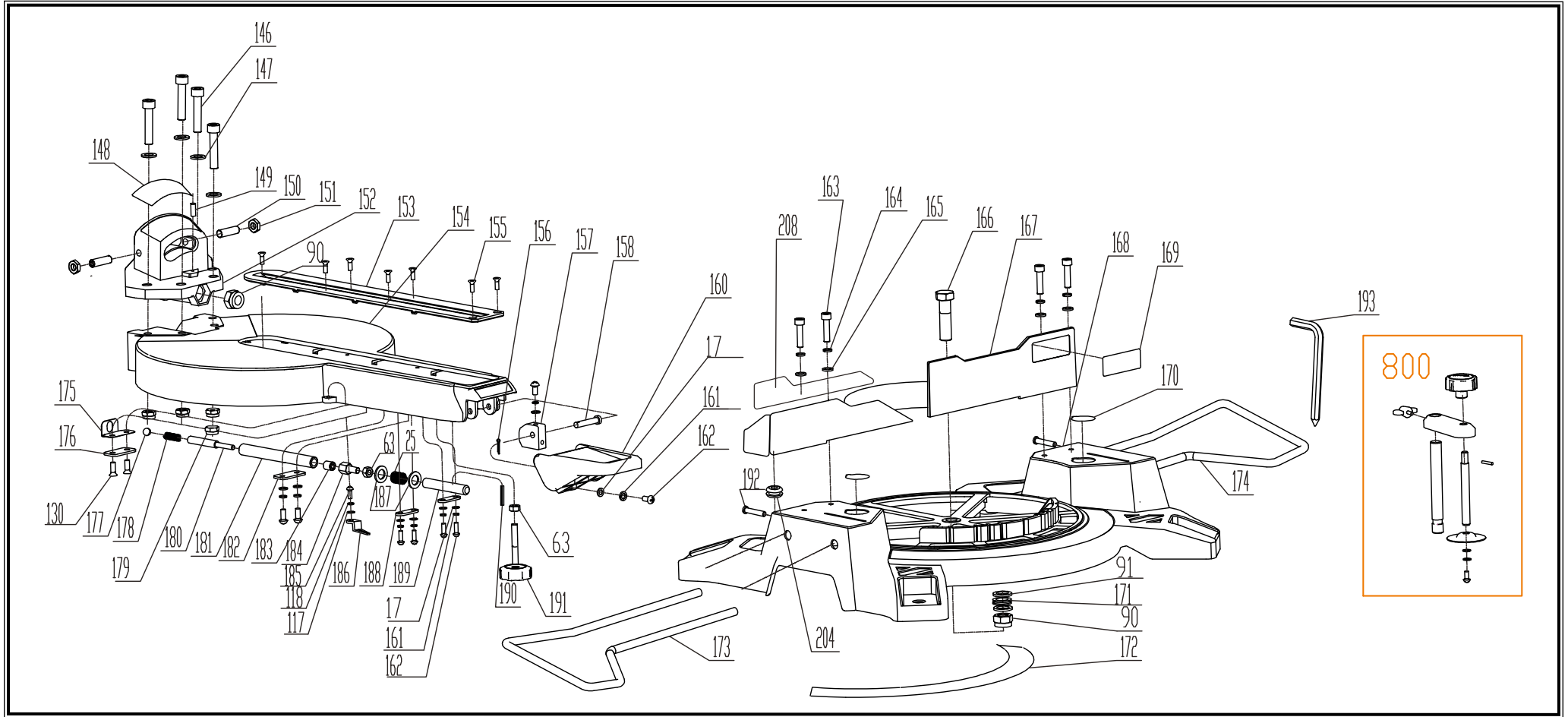
| POS. | CODE | DESCRIPTION | QTY |
|------|--------|---|-----|
| 9 | A07917 | SPRING WASHER | 1 |
| 10 | A07918 | FLAT WASHER | 1 |
| 59 | A07947 | SCREW M5X10 | 1 |
| 104 | A07989 | BUMPER | 1 |
| 108 | A07993 | SCREW M5X6 | 2 |
| 116 | A07995 | WINDING SUPPORT | 1 |
| 117 | A07996 | FLAT WASHER | 2 |
| 118 | A07997 | SPRING WASHER | 2 |
| 119 | A07998 | SCREW M4X8 | 2 |
| 129 | A08008 | LINEAR ROD SUPPORT BRACKET | 1 |
| 130 | A08009 | SCREW M5X10 | 5 |
| 131 | A08010 | BEARING COVER | 2 |
| 132 | A08011 | BEARING | 4 |
| 133 | A08012 | LINEAR ROD STOP KNOB | 1 |
| 134 | A08013 | LINEAR ROD | 2 |
| 135 | A08014 | BEVEL ANGLE SCALE INDICATOR | 1 |
| 136 | A08015 | BEARING SUPPORT | 2 |
| 137 | A08016 | LINEAR ROD SUPPORT BRACKET LOCK KNOB | 1 |
| 138 | A08017 | LINEAR ROD SUPPORT BRACKET LOCK HANDLE SPRING | 1 |
| 139 | A08018 | LINEAR ROD SUPPORT BRACKET LOCK HANDLE | 1 |
| 140 | A08019 | NUT M10 | 1 |
| 141 | A08020 | PIVOT PIN FOR LINEAR ROD SUPPORT BRACKET | 1 |
| 142 | A08021 | FLAT WASHER | 1 |
| 143 | A08022 | FRICTION WASHER | 1 |
| 144 | A08023 | LINEAR ROD SUPPORT BRACKET ARM | 1 |
| 145 | A08024 | BEVEL ANGLE LOCK PIN | 1 |
| 185 | A08073 | SCREW M4X10 | 1 |
| 201 | A08074 | CORD QUOIT | 1 |



| POS. | CODE | DESCRIPTION | QTY |
|------|--------|---------------------|-----|
| 17 | A07924 | FLAT WASHER | 5 |
| 25 | A00448 | SPINDLE LOCK SPRING | 1 |
| 63 | A07951 | NUT M6 | 2 |
| 90 | A07975 | LOOSE-PROOF NUT M12 | 2 |
| 91 | A07976 | FLAT WASHER | 2 |
| 117 | A07996 | FLAT WASHER | 1 |
| 118 | A07997 | SPRING WASHER | 1 |

| POS. | CODE | DESCRIPTION | QTY |
|------|--------|-------------|-----|
| 130 | A08009 | SCREW M5X10 | 2 |
| 146 | A08025 | SCREW M8X45 | 4 |
| 147 | A08026 | FLAT WASHER | 4 |
| 148 | A08027 | BEVEL LABEL | 1 |
| 149 | A08028 | SCREW M5X20 | 1 |
| 150 | A08029 | SCREW M8X30 | 2 |
| 151 | A08030 | NUT M8 | 2 |

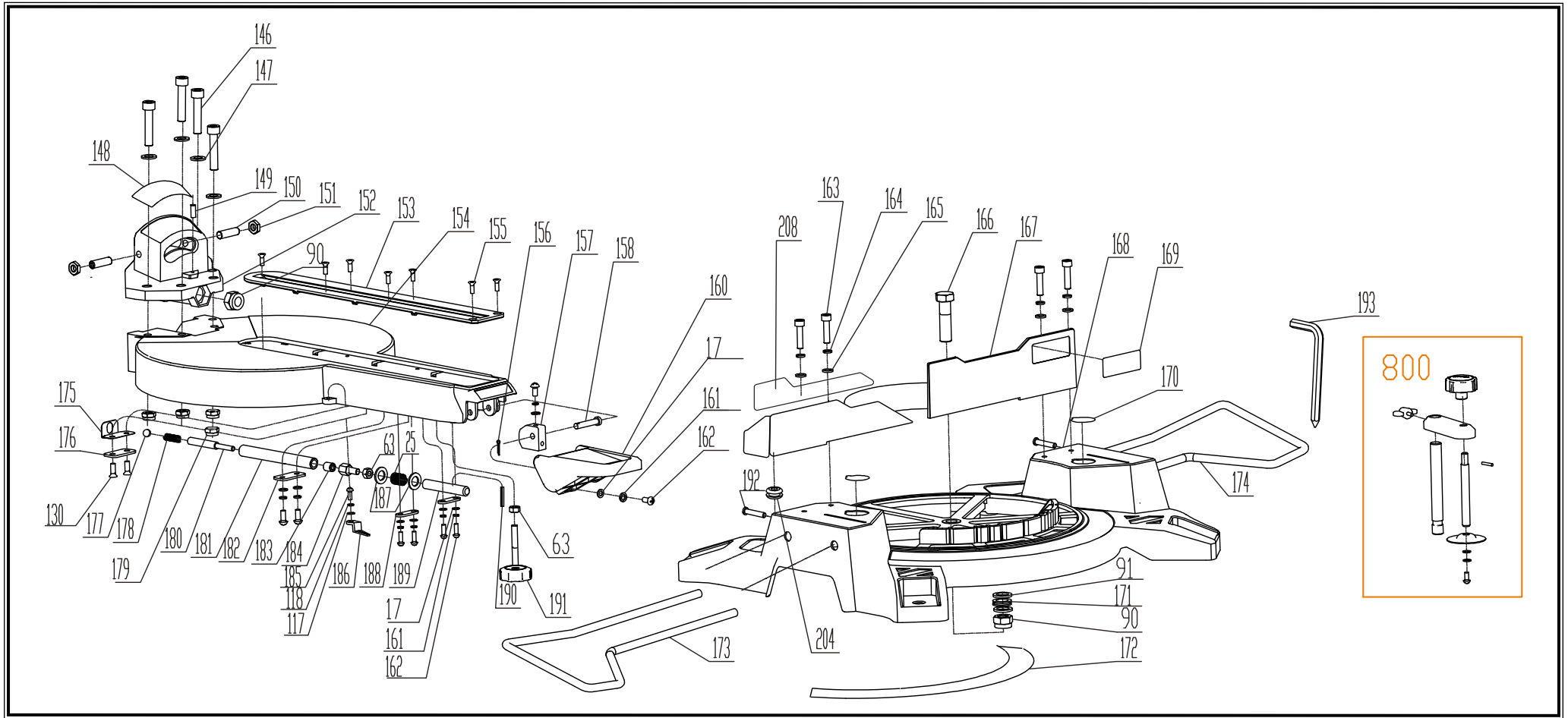
| POS. | CODE | DESCRIPTION | QTY |
|------|--------|------------------------------|-----|
| 152 | A08031 | TABLE PIVOT BRACKET | 1 |
| 153 | A08032 | SLOTTED PLATE | 1 |
| 154 | A08033 | TURNING TABLE | 1 |
| 155 | A08034 | HEAD SCREW M4X10 | 7 |
| 156 | A08035 | PIN ON THE TABLE LOCK HANDLE | 1 |
| 157 | A08036 | LOCKING CAM | 1 |
| 158 | A08037 | CAM PIN | 1 |



| POS. | CODE | DESCRIPTION | QTY |
|------|--------|---------------------------|-----|
| 160 | A08039 | TURNING TABLE LOCK HANDLE | 1 |
| 161 | A08040 | SPRING WASHER | 3 |
| 162 | A08041 | SCREW M5X12 | 3 |
| 163 | A08042 | SCREW M6X25 | 4 |
| 164 | A08043 | SPRING WASHER | 4 |
| 165 | A08044 | FLAT WASHER | 4 |
| 166 | A08045 | BASE SCREW | 1 |

| POS. | CODE | DESCRIPTION | QTY |
|------|--------|----------------------------|-----|
| 167 | A08046 | FENCE | 1 |
| 168 | A08047 | BASE | 1 |
| 169 | A08048 | FENCE LABEL | 1 |
| 170 | A08049 | BASE WARNING LABEL | 2 |
| 171 | A08050 | WAVE WASHER | 1 |
| 172 | A08051 | TURUNING TABLE SCALE LABEL | 1 |
| 173 | A08052 | LEFT EXTENSION BAR | 1 |

| POS. | CODE | DESCRIPTION | QTY |
|------|--------|----------------------------|-----|
| 174 | A08053 | RIGHT EXTENSION BAR | 1 |
| 175 | A08054 | MITER LOCK SPRING LEVER | 1 |
| 176 | A08055 | MITER LOCK PLATE | 1 |
| 177 | A08056 | STEEL BALL IN 8MM DIAMETER | 1 |
| 178 | A08057 | MITER LOCK SPRING | 1 |
| 179 | A08058 | LOOSE-PROOF NUT M8 | 4 |
| 180 | A08059 | MITER LOCK MIDDLE LEVER | 1 |



| POS. | CODE | DESCRIPTION | QTY |
|------|--------|-------------------------------------|-----|
| 181 | A08060 | MITER LOCK FRONT LEVER | 1 |
| 182 | A08061 | MITER LOCK MIDDLE PLATE | 1 |
| 183 | A08062 | INNER HEXAGON SCREW M8X10 | 1 |
| 184 | A08063 | TURNING TABLE LOCKING SCREW | 1 |
| 185 | A08073 | SCREW M4X10 | 1 |
| 186 | A08065 | TURNING TABLE ANGLE SCALE INDICATOR | 1 |
| 187 | A08066 | FLAT WASHER | 2 |

| POS. | CODE | DESCRIPTION | QTY |
|------|--------|-------------------------------------|-----|
| 188 | A08067 | MITER LOCK FRONT PLATE | 2 |
| 189 | A08068 | MITER LOCK BACK LEVER | 1 |
| 190 | A08069 | SPRING PIN | 1 |
| 191 | A08070 | BALANCING FOOT | 1 |
| 192 | A08071 | CROSS RECESSED PAN HEAD SCREW M6X35 | 1 |
| 193 | A08072 | ALLEN WRENCH M8 | 1 |
| 800 | A08079 | WORKING CLAMP ASSEMBLY | 1 |

| POS. | CODE | DESCRIPTION | QTY |
|------|--------|-----------------|-----|
| 204 | A08077 | WRENCH HOLDER | 1 |
| 208 | A02084 | EXTENSION FENCE | 1 |