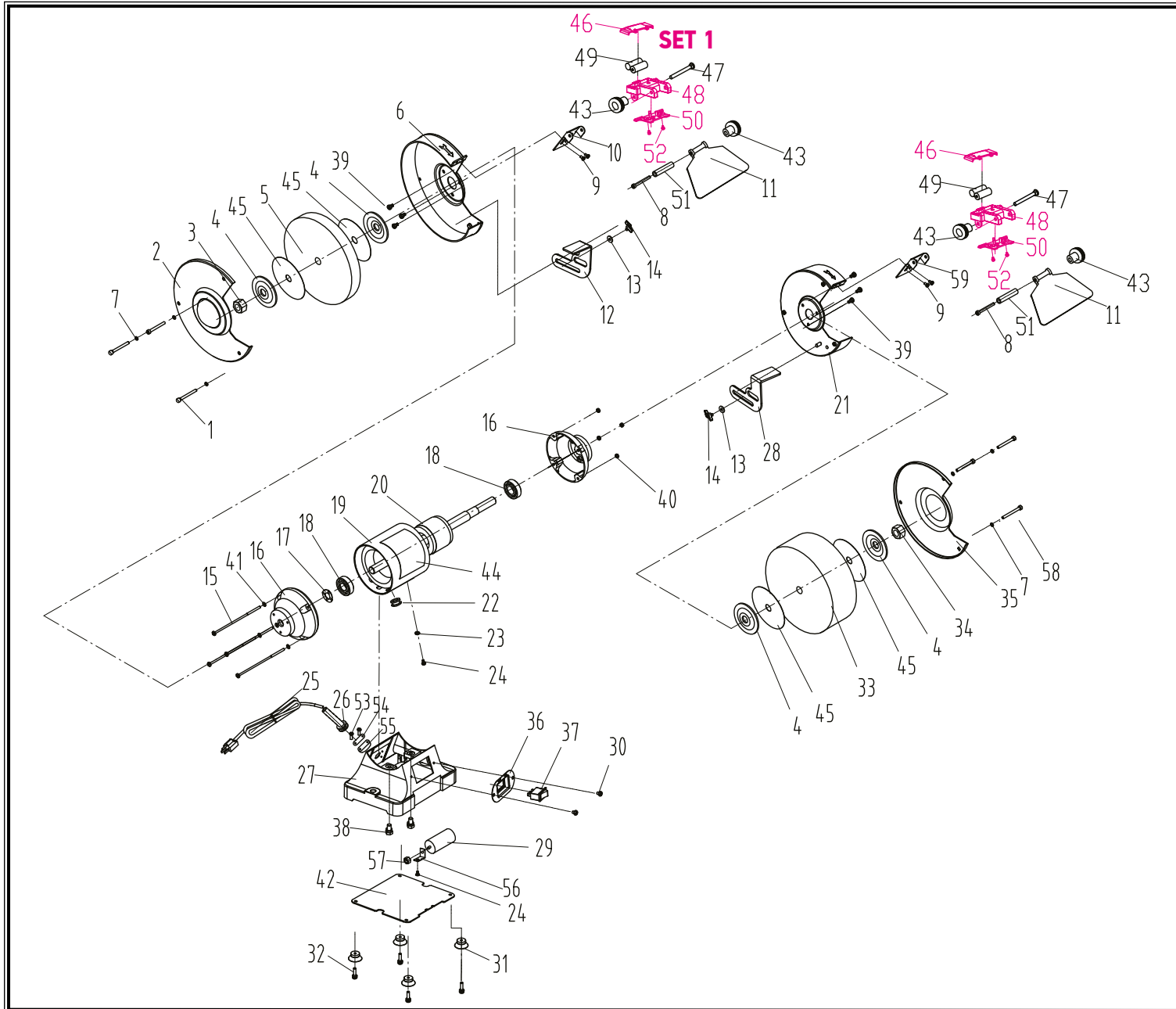


POS.	CODE	DESCRIPTION	QTY
1	A12220	SCREW M5X46	3
2	A12221	LEFT GUARD COVER	1
3	A12222	NUT M16 LEFT	1
4	A12223	FLANGE	4
5		WHEEL 200X20X15,88	1
6	A12224	LEFT INNER GUARD	1
7	A12225	WASHER	6
8	A12226	BOLT M5X55	2
9	A12227	SCREW MX8	4
10	A12228	BAFFLE	1
11	A12229	EYE SHIELD	2
12	A12230	LEFT TOOL REST	1
13	A12231	FLAT WASHER	2
14	A12232	SMALL AIRFOILS LOCK HANDLE	2
15	A12233	SCREW M5X145	4
16	A12234	ALUMINUM PLATE	2
17	A12235	WAVE SPRING WASHER	1
18	A12236	BEARING 6203-RZ	2
19	A12237	STATOR	1
20	A12238	ROTOR	1
21	A12239	RIGHT INNER GUARD	1
22	A12240	POWER CORD SHEATH	1
23	A12241	LOCK WASHER	1
24	A12242	SCREW M4X8	2
25	47529	ΚΑΛΩΔΙΟ 3X1,50 H05VV-F 3M	1
26	A12243	RUBBER SHEATH	1
27	A12244	BASE	1
28	A12245	RIGHT TOOL REST	1



POS.	CODE	DESCRIPTION	QTY
29	A06957	CAPACITOR 6μF	1
30	A12246	SCREW M4X8	2
31	A06952	RUBBER FEET	4
32	A12248	SCREW M4X16	4
33		WHEEL 200X40X15,88	1
34	A12249	NUT M16	1
35	A12250	RIGHT GUARD COVER	1
36	A12251	SWITCH BOARD	1
37	A06958	SWITCH	1
38	A12252	SCREW M6X18	2
39	A12253	SCREW M5X10	6
40	A12254	NUT M5	4
41	A12255	FLAT WASHER	4
42	A12247	CLAPBOARD	1
43	A12256	EYE SHIELD LOCK HANDLE	4
44	A12257	DATA LABEL	1
45		WHEEL LABEL	4
	<b>SET</b> <b>(46+48+50+52)</b>	LAMP COVER ASSEMBLY	2
47	A12259	BOLT M5X60	2
49		BATTERY AAA	4
51	A12262	CUSHION COVERS	2
53	A12264	SCREW M4X16	2
54	A12265	STRAIN RELIEF	1
55	A12266	STRAIN RELIEF BOARD	1
56	A12267	CAPACITOR SUPPORT SUBPLATE	1
57	A12268	NUT M8	1
58	A12269	SCREW M5X62	3
59	A12270	WIDENED BAFFLE	1