

novacolor®
I colori dell'Architettura

Swahili

Rivestimento decorativo testurizzato per interni ad effetto metallizzato oro e argento
Decorative textured interior trowel-on coating with gold and silver metallic patterns

novacolor.it



Swahili

IT. Rivestimento decorativo testurizzato per interni ad effetto metallizzato oro e argento

Applicare SWAHILI con pennello "spalter", in uno o due strati. Il prodotto può essere diluito con massimo 20% di acqua in funzione dell'effetto estetico desiderato. Resa: 6-7 m²/l.

Per maggiori informazioni consultare la scheda tecnica.

EN. Decorative textured interior trowel-on coating with gold and silver metallic patterns

Apply SWAHILI with "spalter" brush, in one or two layers. The product can be diluted with maximum 20% of water according to the desired effect.

Yield: 6-7 m²/l.

For further information please check the technical data sheet.

FR. Revêtement décoratif texturisé pour intérieurs à effet métallisé or et argent

Appliquer SWAHILI avec pinceau type "spalter" en une ou deux couches.

Le produit peut être dilué avec 20% d'eau maximum, en fonction de l'effet esthétique désiré.

Rendement: 6-7 m²/l.

Pour plus d'informations consulter la fiche technique.

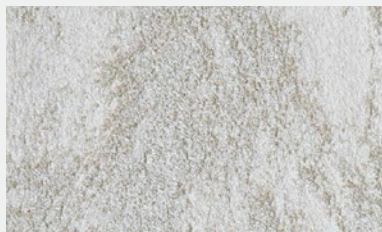
DE. Texturierte dekorative Innenwandbeschichtung mit metallisiertem Gold und Silver Effekt

Eine oder zwei Schichten SWAHILI, mit einem „Spalter Pinsel“ auftragen. Das Produkt kann je nach dem gewünschten ästhetischen Effekt mit bis zu 20% Wasser verdünnt werden.

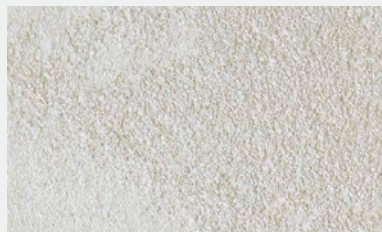
Ergiebigkeit: 6-7 m²/l in zwei Schichten.

Für weitere Info bitte siehe technisches Merkblatt.





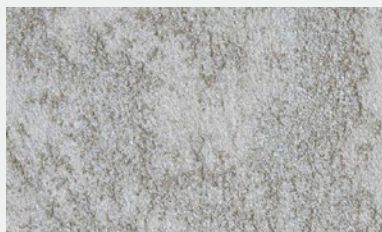
SWS 18000



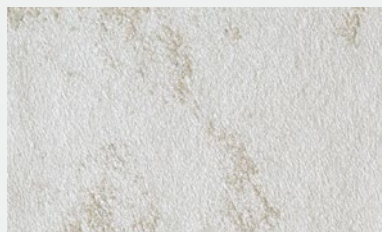
SWS 18005



SWS 18010



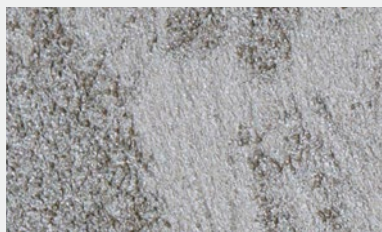
SWS 18001



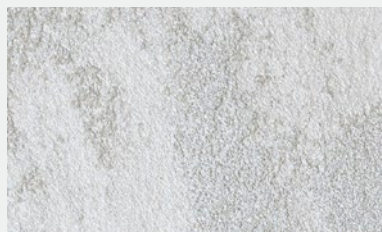
SWS 18006



SWS 18011



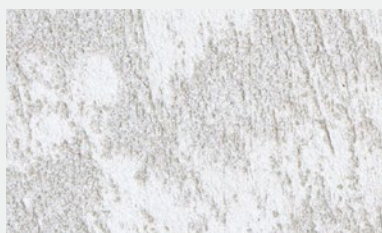
SWS 18002



SWS 18007



SWS 18012



SWS 18004



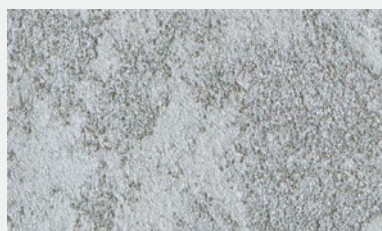
SWS 18008



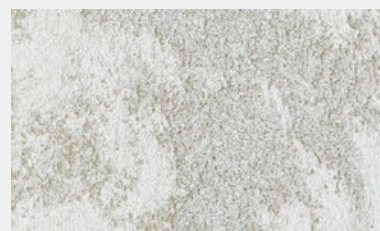
SWS 18013



SWAHILI EXTRA WHITE



SWS 18009



SWS 18014



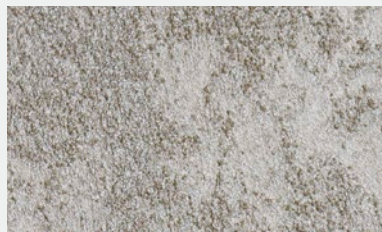
SWS 18003



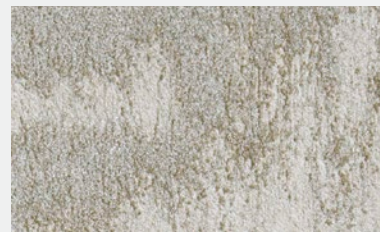
SWS 18056



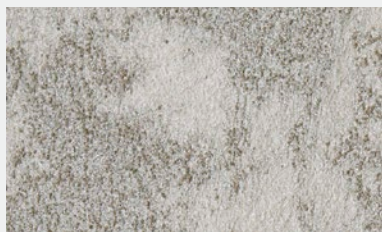
SWS 18015



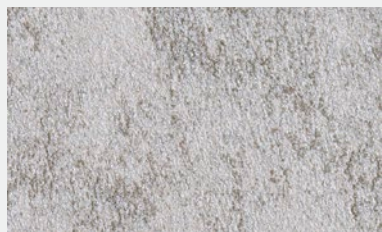
SWS 18020



SWS 18025



SWS 18016



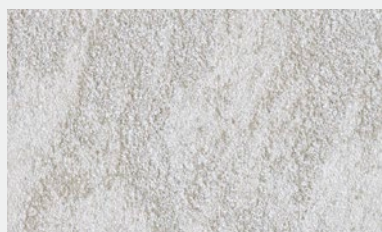
SWS 18021



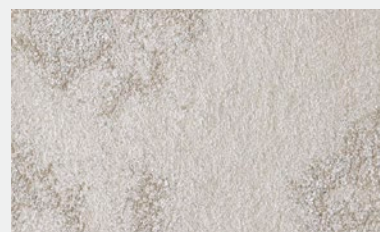
SWS 18026



SWS 18017



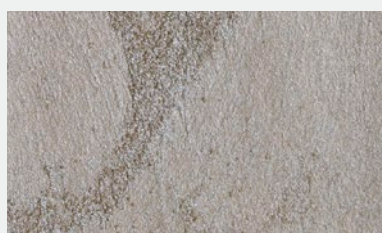
SWS 18022



SWS 18027



SWS 18018



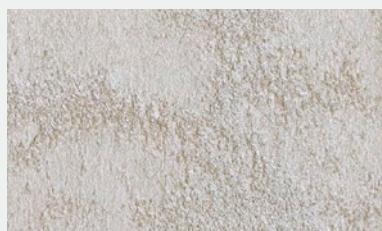
SWS 18023



SWS 18028



SWG 18019



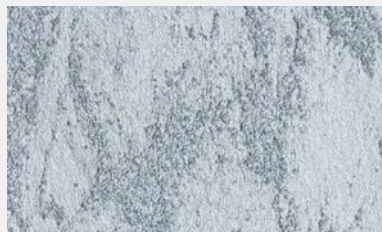
SWS 18024



SWS 18029



SWS 18030



SWS 18035



SWS 18040



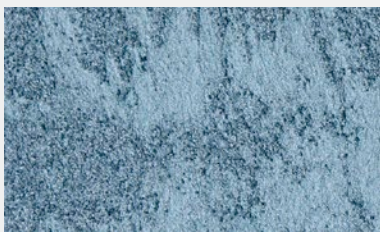
SWS 18031



SWS 18036



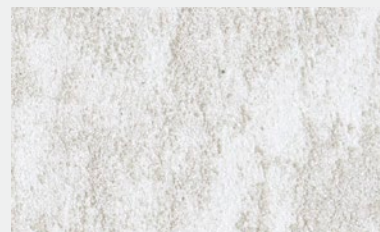
SWS 18041



SWS 18032



SWS 18037



SWAHILI SILVER



SWS 18033



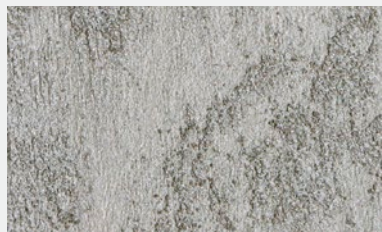
SWS 18038



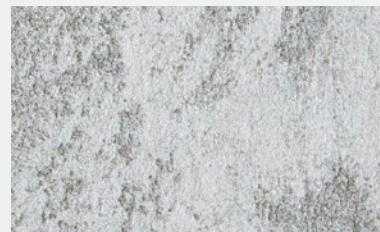
SWS 18042



SWS 18034

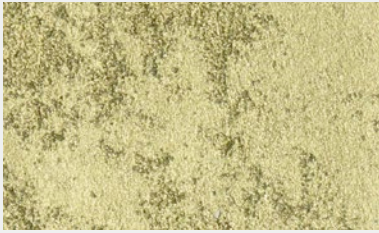


SWS 18039

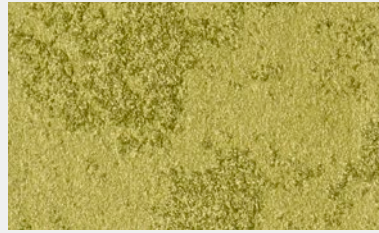


SWS 18043

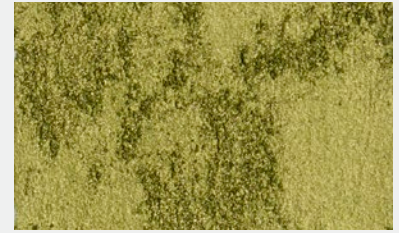




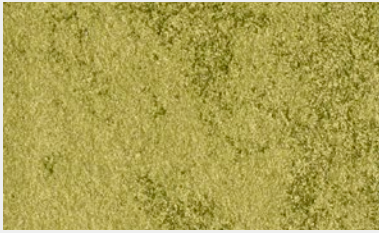
SWG 18044



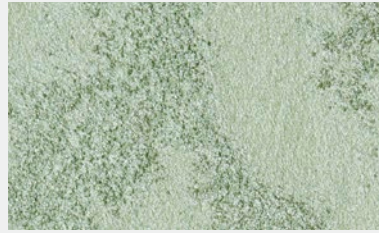
SWG 18049



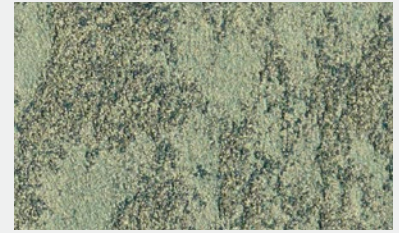
SWG 18054



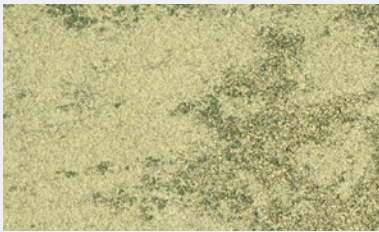
SWG 18045



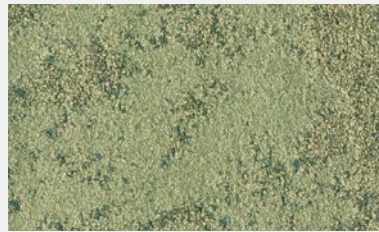
SWS 18050



SWG 18055



SWG 18046



SWG 18051



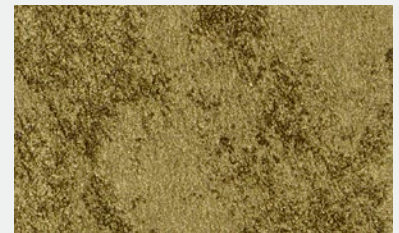
SWAHILI BASE GOLD



SWG 18047



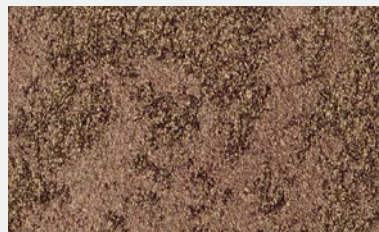
SWG 18052



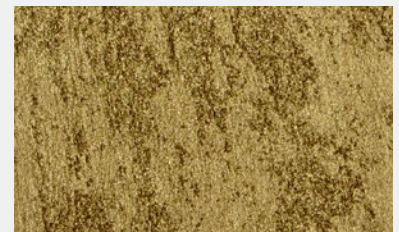
SWG 18057



SWG 18048



SWG 18053



SWG 18058



Swahili



SWS 18059



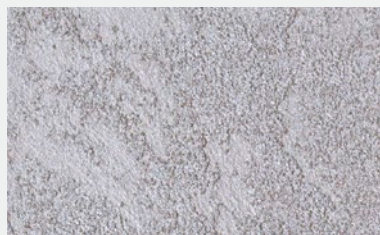
SWS 18062



TARTAN EFFECT
SWS 18065 SU/ON NOVALUX E



SWS 18060



SWS 18063



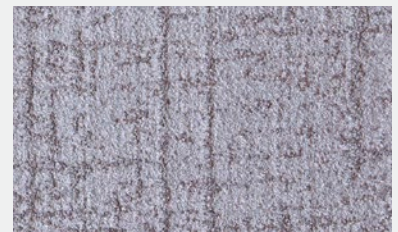
TARTAN EFFECT
SWS 18066 SU/ON NOVALUX E



SWS 18061



SWS 18064



TARTAN EFFECT
SWS 18067 SU/ON NOVALUX E



SWAHILI



Certificato A+ per le basse emissioni di sostanze volatili nell'aria.
A+ Certified for the low emissions of volatile substances in the air.



Riduce il carbon footprint. Certificato REDcert².
Reduction of the carbon footprint. REDcert² Certified.

Le tonalità di questa cartella hanno valore puramente indicativo. The color samples in this color chart should be considered purely indicative.

novacolor[®]
I colori dell'Architettura

Novacolor Back office:
Via U. Aldrovandi 10, 47122 Forlì (FC)
Tel +39 0543 401840 – info@novacolor.it



Novacolor is committed to reduce
the environmental impact by producing
friendly materials.



AZIENDA CON
SISTEMA DI GESTIONE
CERTIFICATO DA DNV
ISO 9001 • ISO 14001

COMPANY WITH
MANAGEMENT SYSTEM
CERTIFIED BY DNV
ISO 9001 • ISO 14001

Made in Italy