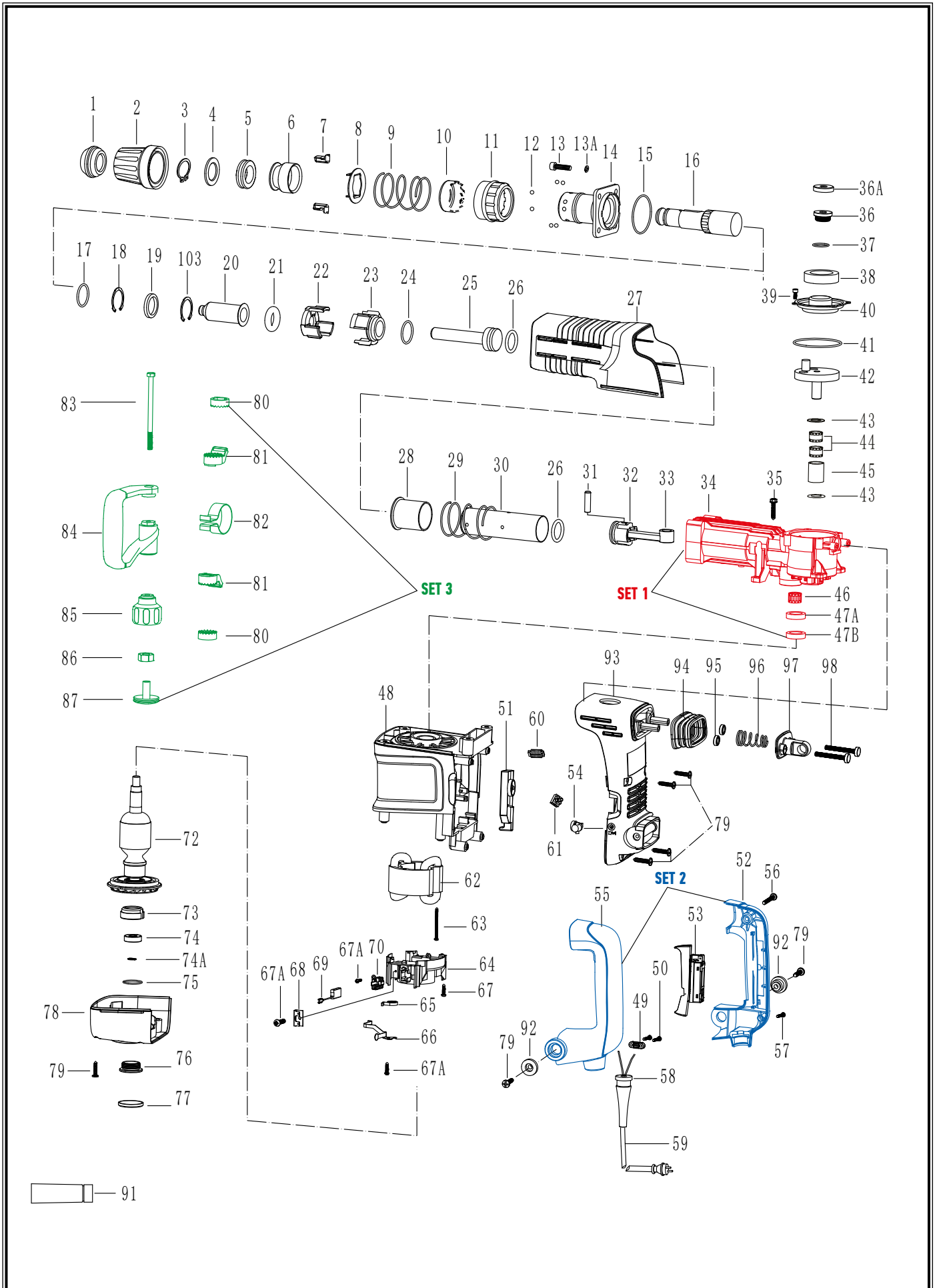


POS.	CODE	DESCRIPTION	QTY
1	A00906	HAMMER ROD PROTECTOR	1
2	A00907	PROTECTIVE LINING	1
3	A00908	Ø30 RETAINING RING	1
4	A00909	SUPPORT PATCH	1
5	A00910	SHOCK ABSORPTION RING	1
6	A00911	MOVE LIMITED RING	1
7	A00912	INSERT BLOCK	2
8	A00913	CHANGE PLATE	1
9	A00914	SUPPORT RING SPRING	1
10	A00915	SUPPORT RING	1
11	A00916	MOVE LIMITED RING	1
12	A00917	Ø6.5 STEEL BALL	8
13	A00918	HEX. SOCKET BOLT M8×30	4
13A	A00919	Ø8 SPRING WASHER	4
14	A00920	FLANGE COVER	1
15	A00921	O-RING	1
16	A00922	HAMMER ROD SLEEVE	1
17	A00923	O-RING	1
18	A00924	Ø41 RETAINING RING	1
19	A00925	OIL SEAL RING	1
20	A00926	IMPACT PIN	1
21	A00927	O-RING	1
22	A00928	CONTROL PLATE	1
23	A00929	FIXED DISTANCE SLEEVE	1
24	A00930	O-RING	1

POS.	CODE	DESCRIPTION	QTY
25	A00931	IMPACT BLOC	1
26	A00932	O-RING	2
27	A00933	COVER	1
28	A00934	CONTROL SLEEVE	1
29	A00935	CONTROL SLEEVE SPRING	1
30	A00936	CYLINDER	1
31	A00937	PISTON PIN	1
32	A00938	PISTON	1
33	A00939	CONNECTING ROD	1
34, 36 47A, 47B (SET1)	A00940	IMPACT BODY	1
35	A00941	TAPPING SCREW ST6.3X32	4
36	A00942	OIL TANK COVER	1
36A	A00943	ADORN COVER	1
37	A00944	RUBBER WASHER	1
38	A00945	FELT RING	1
39	A0784	BOLT M5X12	4
40	A00946	SHELL COVER	1
41	A00947	O-RING	1
42	A00948	ECCENTRIC GEAR SUB ASSEMBLY	1
43	43184	BEARING 6002 RS	2
44	A00949	DISTANCE RING	1
46	A00950	NEEDLE BEARING NK20×28×13	1
47A	A00951	SEAL RING	1

POS.	CODE	DESCRIPTION	QTY
47B	A00952	SEAL RING	1
48	A00953	HOUSING	1
49	A00798	CORD CLIP	1
50	A00902	SCREW ST4.2X18	2
51	A00954	SPEED ADJUSTER	1
52+55 (SET2)	A00957	MAIN HANDLE (LEFT +RIGHT)	1
53	A00790	SWITCH	1
54	A00956	INDICATOR	1
56	A00958	ST5.5×45 TAPPING SCREW	1
57	A00959	ST4.2×22 TAPPING SCREW	1
58	A00896	CORD ARMOR	1
59	40754	CABLE	1
60	A00960	ELECTRICITY FEELS	1
61	A00795	RIVET	2
62	A00961	STATOR	1
63	A00962	ST4.8×58 TAPPING SCREW	2
64	A00963	CARBON BRUSH BRACKET	1
65	A00964	SPRING	2
66	A00965	METAL CONTACT PLATE	1
67	A00966	TAPPING SCREW ST3.5X16	3
67A	A00777	SCREW ST3.5X12	5
68	A00967	METAL INSERT	2
69	A00968	CARBON BRUSH SET	1
70	A00969	CARBON BRUSH WIRE	2

POS.	CODE	DESCRIPTION	QTY
72	A00970	ARMATURE	1
73	A00971	BEARING SLEEVE	1
74	39626	BEARING 6200 RS	1
74A	A00972	Ø10 RETAINING RING	1
75	A00973	O-RING	1
76	A00974	SCREW RING	1
77	A00975	PROTECTED COVER	1
78	A00976	BEARING COVER	1
79	A00791	SCREW ST5.5X25	10
80-87 (SET3)	A00977	SIDE HANDLE	1
91	A00903	OIL BOTTLE	1
92	A00978	MAIN HANDLE PLATEN	2
93	A00979	MAIN HANDLE SEAT	1
94	A00980	SHOCK ABSORPTION JACKET	1
95	A00981	SHOCK ABSORPTION FERRULE	2
96	A00982	SHOCK ABSORPTION SPRING	1
97	A00983	SPRING RACK	1
98	A00984	SCREW M6×50	2
103	A0985	Ø 42 RETAINING RING	1



POS.	CODE	DESCRIPTION	QTY	POS.	CODE	DESCRIPTION	QTY	POS.	CODE	DESCRIPTION	QTY
1	A00906	HAMMER ROD PROTECTOR	1	25	A00931	IMPACT BLOCK	1	47A	A00951	SEAL RING	1
2	A00907	PROTECTIVE LINING	1	26	A00932	O-RING	2	47B	A00952	SEAL RING	1
3	A00908	Ø28 RETAINING RING	1	27	A00933	COVER	1	48	A00953	HOUSING	1
4	A00909	SUPPORT PATCH	1	28	A00934	CONTROL SLEEVE	1	49	A00798	CORD CLIP	1
5	A00910	SHOCK ABSORPTION RING	1	29	A00935	CONTROL SLEEVE SPRING	1	50	A00902	SCREW ST4.2X18	2
6	A00911	MOVE LIMITED RING	1	30	A00936	CYLINDER	1	51	A00954	SPEED ADJUSTER	1
7	A00912	INSERT BLOCK	2	31	A00937	PISTON PIN	1	52+55 (SET2)	A00957	MAIN HANDLE (LEFT +RIGHT)	1
8	A00913	CHANGE PLATE	1	32	A00938	PISTON	1	53	A00790	SWITCH	1
9	A00914	SUPPORT RING SPRING	1	33	A00939	CONNECTING ROD ASSEMBLY	1	54	A00956	INDICATOR	1
10	A00915	SUPPORT RING	1	34,36,47A,47B (SET1)	A06304	IMPACT BODY	1	56	A00958	ST5.5×45 TAPPING SCREW	1
11	A00916	MOVE LIMITED RING	1	35	A00941	TAPPING SCREW ST6.3X32	4	57	A00959	ST4.2×22 TAPPING SCREW	1
12	A00917	Ø6.5 STEEL BALL	8	36	A00942	OIL TANK COVER	1	58	A00896	CORD ARMOR	1
13	A00918	HEX. SOCKET BOLT M8×30	4	36A	A00943	ADORN COVER	1	59	40754	CABLE	1
13A	A00919	Ø8 SPRING WASHER	4	37	A00944	RUBBER WASHER	1	60	A00960	ELECTRICITY FEELS	1
14	A00920	FLANGE COVER	1	38	A00945	FELT RING	1	61	A00795	RIVET	2
15	A00921	O-RING	1	39	A00784	BOLT M5X12	4	62	A00961	STATOR	1
16	A00922	HAMMER ROD SLEEVE	1	40	A00946	SHELL COVER	1	63	A00962	ST4.8×58 TAPPING SCREW	2
17	A00923	O-RING	1	41	A00947	O-RING	1	64	A00963	CARBON BRUSH BRACKET	1
18	A00924	Ø41 RETAINING RING	2	42	A06305	ECCENTRIC GEAR SUB ASSEMBLY	1	65	A00964	SPRING	2
19	A00925	OIL SEAL RING	1	43	A06307	BEARING 6002 RS	2	66	A00965	METAL CONTACT PLATE	1
20	A00926	IMPACT PIN	1	44	A06308	DISTANCE RING	2	67	A00966	TAPPING SCREW ST3.5X16	3
21	A00927	O-RING	1	45	A06309	NEEDLE FERRULE	1	67A	A00777	SCREW ST3.5X12	5
22	A00928	CONTROL PLATE	1	46	A00950	NEEDLE BEARING NK20×28×13	1	68	A00967	METAL INSERT	2
23	A00929	FIXED DISTANCE SLEEVE	1					69	A00968	CARBON BRUSH SET	1
24	A00930	O-RING	1								

POS.	CODE	DESCRIPTION	QTY
70	A00969	CARBON BRUSH WIRE	2
72	A00970	ARMATURE	1
73	A00971	BEARING SLEEVE	1
74	39626	BEARING 6200 RS	1
75	A00973	O-RING	1
74A	A00972	Ø10 RETAINING RING	1
76	A00974	SCREW RING	1
77	A00975	PROTECTED COVER	1
78	A00976	BEARING COVER	1
79	A00791	SCREW ST5.5X25	10
80-87 (SET3)	A06306	SIDE HANDLE	1
91	A00903	OIL BOTTLE	1
92	A00978	MAIN HANDLE PLATEN	2
93	A00979	MAIN HANDLE SEAT	1
94	A00980	SHOCK ABSORPTION JACKET	1
95	A00981	SHOCK ABSORPTION FERRULE	2
96	A00982	SHOCK ABSORPTION SPRING	1
97	A00983	SPRING RACK	1
98	A00984	SCREW M6x50	2
103	A00985	RETAINING RING	1